



12+1
OUTLET

INTELLIGENT RACK MOUNT POWER DISTRIBUTION UNIT

PR-R13PI

Introduction

Thank you for purchasing the PR-R13PI. Your new Power Distribution Unit (PDU) by Big Dog Power provides filtered AC power to your equipment. 12 individually controlled outlets provide up to 5100 Joules of surge Protection. Wi-Fi and Wired LAN connections allow for flexibility with placement and network connectivity. The built in Self-Healing functions of the PR-R13PI will keep your network connected equipment going by automatically resetting the power going to the outlet.



Features

- 12 individually controlled outlets
- 1 always on Front outlet
- Rack Mountable 2U
- Self-Healing functions for network connected equipment
- Surge Mileage: Track when a Surge Event happens and the remaining health of the surge protection
- Replaceable Surge modules
- 2040 and 3060 Joule surge protection
- Temperature monitoring with 4 thermostats
- Web and Mobile app for remote management and notification
- I/O for additional integrations
- RS-232/Serial and IP automation integration
- Grounding Lug
- 120V/12A Rating



SMART OUTLETS
+1 ALWAYS ON



REPLACEABLE M.O.V.
SURGE MODULES



POWER METERING
INDIVIDUAL OUTLETS



MAVBASE APP
MANAGEMENT



SELF HEALING
AUTO REBOOT



4 SMART
THERMISTORS



FLEXIBLE MOUNTING
OPTIONS



WIRED/WIRELESS
CONNECTIVITY



SET MULTIPLE
SCHEDULES



CONNECTED EQUIPMENT
GUARANTEE

Big Dog Power™

by Metra Home Theatre, LLC Limited Product Warranty and Connected Equipment Limited Warranty

Valid in the United States and Canada

THIS WARRANTY DEFINES ETHEREAL HOME THEATRE. LLC'S LIABILITY FOR ANY AND ALL DAMAGES RESULTING FROM THE OPERATION OR FAILURE OF THE PRODUCT. THE WARRANTY PROVIDED IS IN LIEU OF ANY AND ALL OTHER WARRANTIES, EXPRESS OR IMPLIED. TO THE MAXIMUM EXTENT PERMITTED BY APPLICABLE LAW, METRA DISCLAIMS ANY AND ALL OTHER WARRANTIES WHETHER EXPRESS OR IMPLIED. TO THE MAXIMUM EXTENT PERMITTED BY APPLICABLE LAW, ETHEREAL HOME THEATRE. LLC HEREBY DISCLAIMS ANY AND ALL LIABILITY FOR DIRECT, SPECIAL, INCIDENTAL OR CONSEQUENTIAL DAMAGES RESULTING FROM ANY PRODUCT FAILURE, ANY BREACH OF WARRANTY OR CONDITION, OR UNDER ANY OTHER LEGAL THEORY, INCLUDING BUT NOT LIMITED TO LOSS OF USE; LOSS OF REVENUE; LOSS OF ACTUAL OR ANTICIPATED PROFITS (INCLUDING LOSS OF PROFITS ON

CONTRACTS); LOSS OF THE USE OF MONEY; LOSS OF ANTICIPATED SAVINGS; LOSS OF BUSINESS; LOSS OF OPPORTUNITY; LOSS OF GOODWILL; LOSS OF REPUTATION; LOSS OF, DAMAGE TO, COMPROMISE OR CORRUPTION OF DATA; OR ANY INDIRECT OR CONSEQUENTIAL LOSS OR DAMAGE HOWSOEVER CAUSED INCLUDING THE REPLACEMENT OF EQUIPMENT AND PROPERTY, ANY COSTS OF RECOVERING, PROGRAMMING, OR REPRODUCING ANY PROGRAM OR DATA STORED IN OR USED WITH THE PRODUCT. FURTHER, TO THE MAXIMUM EXTENT ALLOWED BY APPLICABLE LAW, Ethereal Home Theatre, LLC HEREBY EXPLICITLY DISCLAIMS ANY WARRANTY OF MERCHANTABILITY OR FITNESS FOR A PARTICULAR PURPOSE. THESE LIMITATIONS SHALL NOT APPLY TO ANY DEATH OR PERSONAL INJURY CLAIMS, OR ANY LIABILITY FOR INTENTIONAL ACTS OR ACTS OF GROSS NEGLIGENCE

Limited Product Warranty:

Ethereal Home Theatre, LLC warrants this product to be free of material defects for a period of: (1) 5 years for the PR-R13PI, PR-V7PI and PR-W3PI products, (2) 3 years for the PR-S1PI product, (3) PR-RMS1 and PR-RMS2, replaceable surge modules carry a 90 Day warranty from manufacturing defects and (4) 3 years for any other product subject to this Warranty (referred to as the applicable “warranty period”). If the product fails during the warranty period, Ethereal Home Theatre, LLC will, at its option: (1) Repair the product in a reasonable time period, (2) Replace the product with the same model (or a successor model with the same or substantially similar features), or (3) Refund the purchase price. This Warranty applies only to an original purchaser of the product who provides proof of purchase at the time a claim is made.

Conditions and Limitations:

Proof of purchase is required. Damage caused by accidents, abuse, misuse or modification of the surge suppressor will render this warranty null and void. Transient Voltage Surge Suppression devices using MOV (Metal Oxide Varistor) technology are designed to sacrifice themselves to protect the connected equipment. The proper functioning of this surge suppressor during a catastrophic surge event like lightning may result in the depletion of the unit’s protection capabilities. This is not a defect in design, material, or workmanship.

Excluded Items:

This warranty does not apply to: (1) consumable items, such as a replaceable surge protection module, (2) cosmetic damage such as scratches, dents, broken plastic parts, and discoloration (unless same is the result of a defect in materials or workmanship), (3) damage resulting from the failure of another product, (4) damage caused by misuse or abuse, or (5) damage caused by unauthorized service of the product.



PR-R13PI

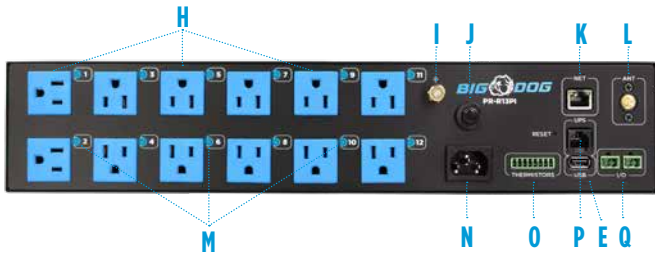
Connected Equipment Limited Warranty:

This is a limited warranty, subject to the conditions, limitations and exclusions identified herein. Ethereal Home Theatre, LLC warrants to the original purchaser of this surge suppressor that it will at its option, pay the fair market value of, repair, or replace, any home entertainment equipment which is damaged by a transient surge while properly connected through the Ethereal Home Theatre, LLC surge suppressor to a properly wired and grounded AC power line. The Ethereal Home Theatre, LLC surge suppressor must have been designed for the particular application.

For additional warranty information including Connected Equipment coverage and process visit us at metraav.com

Anatomy

- A. Configurable Power Button
- B. LCD Display
- C. Display Navigation Buttons
- D. Replaceable Surge Modules
 - S1 – 2040 Joule Rating
 - S2 – 3060 Joule Rating
- E. USB Power Supply
 - 2.4 amp 5v
- F. At a glance status LEDs
 - See [LED functions for more information](#)
- G. Always On Service Outlet
- H. 12 Individually controlled Outlets
- I. Grounding pin
- J. 15-amp Circuit Breaker
- K. Ethernet Port
- L. Wi-Fi Antenna
- M. Outlet Status LEDs
 - See [LED functions for more information](#)
- N. IEC Power Input 120v
- O. Thermistor Inputs
- P. UPS Link
- Q. UPS Link
 - For Future Use
- Q. I/O
 - 1x Contact Sensor Input
 - 1x Relay Output
- R. Surface Mount Location for Rack Ears
- S. 2U Rack Ears



LED Indicators

“G” or Ground

ON: PDU is grounded properly

OFF: PDU is not grounded

“P” or Power

BLUE: Good / Protected and Clean power

RED: Bad / No Protection

“N” or Network

BLINKING RED: No Network Connection

SOLID BLUE: Good Network Connection

RAPID BLINKING RED: PDU failure requires reboot or reset

Outlet Status

ON: Outlet is On

OFF: Outlet is Off

Voltage

SOLID BLUE: Normal / Good Voltage

SOLID RED: Over / Under Voltage

Always On

ON: Outlet is On

OFF: Outlet is Off

Surge Module

ON: Good / Protected

S1 and S2 LED

OFF: Bad / Not Protected

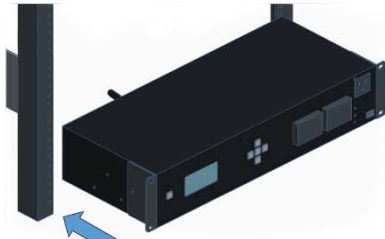
Installation

Rack Mount

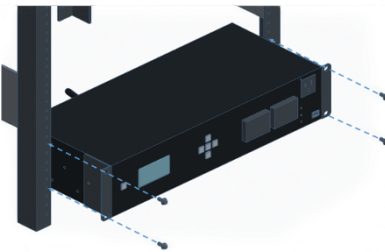
1. Use the included screws to attach the Rack Mount ears to the PDU near the face of the PDU
2. Slide the PDU into the rack where you intend to mount it
3. Secure the PDU using the appropriate screws for your rack



Step 1



Step 2

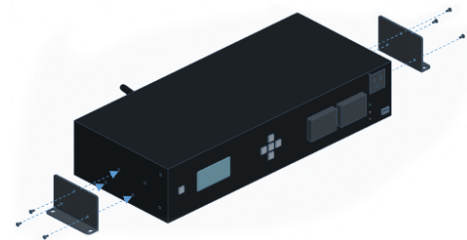


Step 3

Installation

Surface Mount

1. Use the included screws to attach the included Rack Mount ears to PDU at the secondary location
You can find the secondary mount holes halfway towards the back of the PDU
2. Install appropriate surface mount screws (not included) through the Rack Mount ears into the desired surface



Step 1

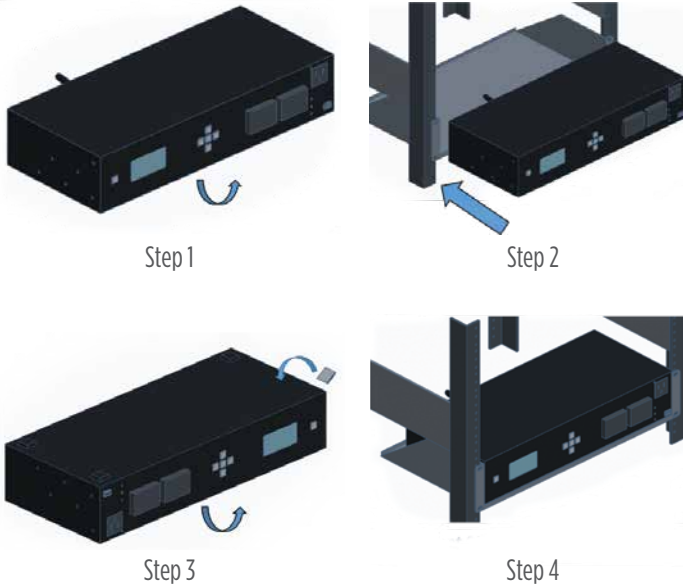


Step 2

Installation

Shelf Mount

1. Remove the protective film over the adhesive on the included Rubber Feet
2. Apply the Rubber feet to the bottom of the PDU
3. Slide the PDU onto shelf
4. Place PDU on Shelf



Connections and Use

Physical Connections

1. Screw in the Wi-Fi Antenna
2. Plug in all to be used connections Including: Ethernet LAN (Skip the Ethernet cable if you will be using Wi-Fi) Connected equipment power cables
3. Insert the female end of the included 6ft power cord into the PR-R13PI
4. Plug in the Male end of the included 6ft power cord into the main outlet on your wall

Wi-Fi Setup

If using the Wi-Fi connection, follow these instructions

1. Plug in the included power cable to the PDU and to the AC main outlet on the wall. Wait approximately 15-30 seconds, the power button will begin to flash
2. Scan for Wi-Fi on your Wi-Fi enabled device with a web browser
3. Connect to the Wi-Fi SSID of the PDU
The SSID of the PDU will be “Metra-xxxxxxxxxx” where the “x” are the MAC address or device ID of the PDU. Verify the code of the SSID matches the MAC address of the PDU with the sticker that is attached to the bottom of the PDU
4. In a web browser go to “192.168.4.1”
5. Go to “Network”
6. Click “SCAN NETWORKS”
The network mode can also be changed before scanning. For ease of setup we’ll use the default DHCP settings.
7. Select the desired network SSID
NOTE: the PDU requires a 2.4Ghz Wi-Fi connection.

8. If required enter the password for the Wi-Fi connection
9. Click “Save”
The PDU will now connect and reboot. After it has rebooted it will attempt to connect to the Wi-Fi signal.
10. Once the PDU has been connected to the network and has access to the web, proceed to the next steps

Replaceable Surge Modules

Remove

1. Firmly grasp the front top and bottom lip of the surge module
2. Pull the surge module from the front of the PDU
A slight side to side motion may help release the surge module from the PDU

Replace

1. Ensure the correct module is being inserted into the correct slot on the PDU
2. Gently slide the surge module into the PDU until you feel resistance
3. Firmly push the surge module into the PDU until you hear and feel a click

DO NOT: Smack the surge module into the slot

Cloud setup

1. Log in to your MAVbase.com account
2. Click the Add New button
3. Click “ADD PDU”
4. Add the PR-R13PI to your account using the MAC address of the PDU

Surge Protection

Protected Circuit(s)

Replaceable 5100 Total Joule Protection from the Line to Neutral to Ground circuit.

For use only with SPD Modules specified by the manufacturer.

This SPD is suitable for use only with manufacturer’s specified Cat. No. PR-RMS1, PR-RMS2 replaceable SPD Module. Using this SPD with other than the manufacturer’s specified SPD may create a risk of fire or shock.

This equipment is not suitable for use in locations where children are likely to be present

“Cet équipement ne convient pas à une utilisation dans des lieux pouvant accueillir des enfants”

Equipment is intended for installation in Restricted Access Area

“Les matériels sont destinés à être installés dans des EMBLEMES À ACCÈS RESTREINT”

Important Safety Instructions

Read and observe the following safety points at all times.

Notice

For indoor use only. Internal components are not sealed from the environment. The device can only be used in a fixed location such as a telecommunication center, or a dedicated computer room. “L’appareil ne peut être utilisé qu’à un endroit fixe tel qu’un centre de télécommunication, ou une salle informatique dédiée.” When you install the device, ensure that the protective earthing connection of the socket-outlet is verified by a skilled person. “Lorsque vous installez l’appareil, assurez-vous que la connexion de mise à la terre de protection de la prise de courant est vérifiée par une personne qualifiée.” Suitable for installation in Information Technology Rooms to power ITE equipment such as Monitors, Computers, Etc. Only use brackets/ attachments/accessories specified by the manufacturer. Do not place the device in an unstable position where it might fall and cause injuries. This equipment is not suitable for use in locations where children are likely to be present. Do not cover this device with a cloth. Do not install it on a carpet or rug.

Caution

Potential injury

Do not use this product with extension cords, multi-outlet power strips, multi-outlet extenders, or UPS devices (other than a Big Dog Power UPS). The power capacity of these accessories can be overloaded by this product and may result in a risk of fire, or property damage.

Exposure to Heat

Do not expose the PDU to direct sunlight or place it near wall heaters, space heaters, or in an enclosed space prone to temperature increase. Do not use the device in a confined, poorly-ventilated location; this can overheat the unit, possibly even causing a fire. If used in a small space other than an EIA-standard rack, ensure that there is adequate space around the device.

Proper Cleaning

In general, the only cleaning necessary for is light dusting. Unplug the PDU from the wall outlet before cleaning it. Do not use liquid or aerosol cleaners.

Warning

Power sources, grounding, and polarization

This plug is designed to be inserted into a

NEMA 5-15 (three-prong grounded) outlet only. Do not force the plug into an outlet that is not designed to accept it. Never dismantle the plug or to alter the power cord, and do not attempt to defeat the grounding feature by using a 3-to-2 prong adapter. If you have questions about grounding, consult your local power company or a qualified electrician. This PDU requires a properly grounded outlet for safety. If you're not sure if your home's electrical wiring is properly grounded, have it checked by a qualified electrician. If a rooftop device such as a satellite dish connects to the PDU, ensure that the device's wires are also properly grounded.

Liquid: avoiding electrical shocks

Do not operate the PDU if liquid of any kind is spilled onto or inside the unit. Do not operate it near rain or water, even water that is contained (for example, bathtub or sink).

Power cord safety

Do not place the power cord near areas with heavy foot traffic (for example, hallways). Do not create a trip hazard with the power cord. If the power cord's protective jacket rips or frays, exposing the internal wiring or shielding, disconnect it from the power source and replace the power cord immediately. See the warranty section of the owner's manual for details.

No User-Serviceable Parts Inside

If the PDU is not operating properly, do not remove any part of the unit (cover, etc.) for repair. Unplug the unit and consult the warranty section of the owner's manual.

FCC Warning

WARNING!! Changes or modifications to this unit not expressly approved by the party responsible for compliance could void the user's authority to operate the equipment. This equipment has been tested and found to comply with the limits for a Class B Digital Device, pursuant to Part 15 of the FCC Rules. These limits are designed to provide reasonable protection against harmful interference in residential installation. This equipment generates, uses and can radiate radio frequency energy and, if not installed and used in accordance with the instruction manual, may cause harmful interference to radio communications. However, there is no guarantee that interference will not occur in a particular installation. If this equipment does cause harmful interference to radio or television reception, which can be determined by turning the equipment off and on, the user is encouraged to try to correct the interference by one or more of the following measures:

- Reorient or relocate the receiving antenna.
- Increase the separation between the equipment and receiver.
- Connect the equipment into an outlet on a circuit different from that to which the receiver is connected.
- Consult the dealer or an experienced radio/TV technician for help.

Notice: (1) An unshielded-type power cord is required in order to meet FCC emission limits and also to prevent interference to the nearby radio and television reception. It is essential that only the supplied power cord be used. (2) Use only shielded cables to connect I/O devices to this equipment.

Note: THE MANUFACTURER IS NOT RESPONSIBLE FOR ANY RADIO OR TV INTERFERENCE CAUSED BY UNAUTHORIZED MODIFICATIONS TO THIS EQUIPMENT. SUCH MODIFICATIONS COULD VOID THE USER'S AUTHORITY TO OPERATE THE EQUIPMENT.

The Class B digital apparatus meets all requirements of the Canadian Interference-Causing Equipment Regulation

“Cet appareil numérique de la class B respecte toutes les exigences du Règlement sur le matériel brouilleur du Canada.”

FCC Part15C+RSS247

To assure continued FCC compliance:

1. Any changes or modifications not expressly approved by the grantee of this device could void the user's authority to operate the equipment.
2. This equipment complies with FCC radiation exposure limits set forth for an uncontrolled environment.

This equipment should be installed and operated with minimum distance 20cm between the radiator & your body.

This radio transmitter [27941-PRR13PI] has been approved by Innovation, Science and Economic Development Canada to operate with the antenna types listed below, with the maximum permissible gain indicated. Antenna types not included in this list that have a gain greater than the maximum gain indicated for any type listed are strictly prohibited for use with this device.

NO.	1
Antenna Type	Dipole
Model Name	Q0211
Gain (Peak)	2dBi

IC

This device complies with Industry Canada license-exempt RSS standard(s). Operation is subject to the following two conditions: (1) this device may not cause interference, and (2) this device must accept any interference, including interference that may cause undesired operation of the device. This equipment complies with IC radiation exposure limits set forth for an uncontrolled environment. This equipment should be installed and operated with minimum distance 20cm between the radiator and your body.

IC French:

Cet appareil radio est conforme au CNR-247d'Industrie Canada. L'utilisation de ce dispositif est autorisée seulement aux deux conditions suivantes : (1) il ne doit pas produire de brouillage, et (2) l'utilisateur du dispositif doit être prêt à accepter tout brouillage radioélectrique reçu, même si ce brouillage est susceptible de compromettre le fonctionnement du dispositif.

Cet équipement est conforme aux limites d'exposition aux rayonnements IC établies pour un environnement non contrôlé. Cet équipement doit être installé et utilisé avec un minimum de 20 cm de distance entre la source de rayonnement et votre corps.

© Copyright 2022 Ethereal Home Theater, LLC.

An online purchase registration is available at www.metraav.com. Registering your surge protector at the time of purchase can make the process a lot easier if you ever need to file a claim.

Please contact the Ethereal Home Theatre, LLC Customer Service Department at 386-257-1186 if you have any questions regarding the product warranty or the connected equipment warranty.

Ethereal Home Theatre, LLC
460 Walker Street
Holly Hill, FL 32117
Phone:386-257-1186
E-Mail: stewart.denton@metraav.com

INTELLIGENT POWER

We've combined all of the features integrators need into one unique power distribution unit to deliver surge protection, remote control, smart home integration, rack temperature management, and more. The 12 individually controllable outlets have power metering, self-healing and automatic reboot capabilities for smarter remote management of your connected devices. An additional service outlet allows direct access for programming and setup without an Internet connection.



WARNING:
Cancer and Reproductive Harm
www.P65Warnings.ca.gov.

Specifications:

OPERATING TEMPERATURE: 14 ° F-104 ° F (-10 ° C-40 ° C)

SURGE PROTECTION: 5100 Joule (Replaceable)

EXTERNAL ANTENNA: Yes

OUTLETS (TOTAL): 13 outlets

ALWAYS-ON OUTLET: 1 (front) service outlet

SWITCHED OUTLETS: 12 (rear)

AC INPUT OUTLET: IEC C14, 15A circuit, product UL rating 12A

CIRCUIT BREAKER (COP): Yes (rear)

CORD LENGTH: 6ft

SAFETY CERTIFICATIONS:

UL/CUL, FCC, UL 62368-1+UL 498+1449 with CSA 269.3+UL 1283, FCC Part15B+ICES-003, FCC ID/ISED (wireless de vice FCC)

WARRANTY: 5 Year Limited



Metra Electronics Corp.
BigDogPower.com
APP: MAVbase.com
386-255-0234